



中国销售中心
China Sales Center

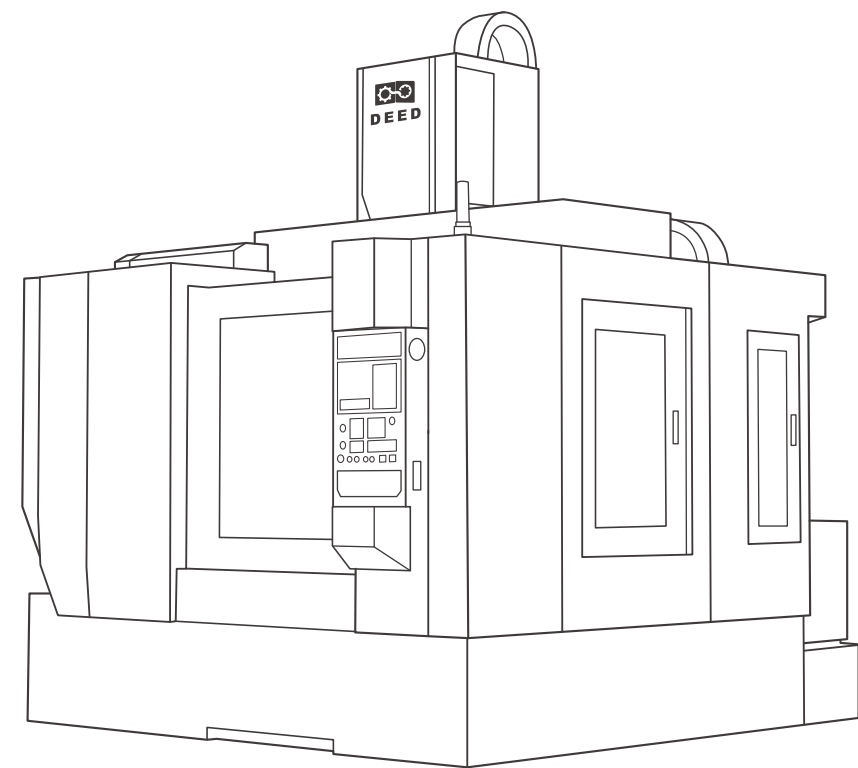
销售热线 / Sales Hotline(China): 0537-3775666
外贸热线 / Sales Hotline(overseas): +86 537 3451030
售后热线 / After-sales Service: 400-113-6699
企业邮箱 / E-mail: sale@deedmt.com / itd@deedmt.com
企业网址 / Website: www.deedmt.com (中国/China) / www.cncindeed.com(国际/overseas)
地址: 山东省济宁市兖州经济开发区永安路
Address: Yong'an Road, Industrial Park, Yanzhou District, Jining City, Shandong Province.



德国 (Germany)
欧洲研发、销售中心
Europe R&D, Sales Center
地址 / Address: Stahlwerkstraße 32-D-57555 Mudersbach

GV立式加工中心

GV Vertical Machining Center



山东蒂德精密机床有限公司
SHANDONG DEED PRECISION MACHINE TOOL CO.,LTD.

蒂德简介

COMPANY PROFILE

山东蒂德精密机床有限公司是一家集高档数控机床研发、生产、销售为一体的高端装备企业，位于济宁市兖州区，现有员工500余人，目前是“中国机床工具工业协会理事单位”和“山东机床通用机械工业协会理事单位”。公司以高速立式加工中心、大型龙门加工中心、高效钻攻加工中心、高精度车削加工中心、高精度五轴联动加工中心、卧式铣镗加工中心及卧式加工中心为主导产品，广泛服务于国内外航空、航天、军工、船舶、汽车、工程机械、轨道交通、5G、精密模具等重点领域。公司大力实施“走出去，引进来”的发展战略，与德国知名数控机床制造企业ROTTLER达成全面战略合作，联合开发具有世界领先水平的高档精密机床，共同开拓全球高端市场，并在德国设立了高端机床研发中心及制造基地——“Hipreed Technology GmbH（汉普瑞德科技有限公司）”，全面实施国际化运营，实现了德国技术和中德制造的完美结合。公司建有国内外5大研发中心，拥有6大省市级创新平台，具备高档机床研发、新材料研制、先进技术测试和可靠性提升等全面的研发、实验、测试、制造优势。通过持续创新和不断突破，已承担24项重点政府科技项目，获得各类知识产权200余项（含发明专利9项）、科技成果奖14项，整体开发、创新能力行业领先。凭借强大的技术、创新优势，公司分别通过了ISO9001质量管理体系认证、ISO14001环境管理体系认证和ISO45001职业健康安全管理体系认证，荣获“国家高新技术企业”、“国家级专精特新‘小巨人’企业”、中国机床行业最高奖“春燕奖”、“中国机床工具行业‘产品质量十佳’”、“中国机械工业科技进步二等奖”等80多项重点荣誉。

Shandong Deed Precision Machine Tool Co., Ltd. is a high-end equipment enterprise integratd with R&D, production and sales. It is located in Yanzhou District, Jining City, with more than 500 people, is currently the governing unit of "China Machine Tool Industry Association " and the governing unit of "Shandong Machine Tool General Machinery Industry Association". The company takes high-speed vertical machining center, large gantry machining center, high-efficiency drilling and tapping machining center, high-precision turning center, high-precision five-axis linkage machining center, horizontal milling and boring machining center and horizontal machining center as the leading products, and serves a wide range of domestic and foreign key industries such as aviation, aerospace, military, shipbuilding, automobile, construction machinery, rail transit, 5G, precision mold and other key fields. The company vigorously implements the development strategy of "going out and bringing in", and has reached a comprehensive strategic cooperation with the well-known German CNC machine tool manufacturing enterprise ROTTLER to jointly develop high-grade precision machine tools and jointly explore the global high-end market. It has set up a high-end machine tool R & D center and manufacturing base in Germany - "Hipreed Technology GmbH", fully implemented international operations, and achieved perfect combination of German technology and Chinese-German manufacturing. The company has set up five domestic and foreign R & D centers, and six provincial and municipal innovation platforms, with high-grade machine tool research and development, new material development, advanced technology testing and reliability improvement and comprehensive R & D, experiment, testing, manufacturing advantages. Through continuous innovation and breakthrough, it has undertaken 24 key governmental science and technology projects, obtained more than 200 intellectual property rights (including 9 invention patents), and 14 scientific and technological achievement awards, and leading overall development and innovation ability of the industry. With strong technology and innovation advantages, the company has passed the ISO9001 quality management system certification, ISO14001 environmental management system certification and ISO45001 occupational health and safety management system certification. It has won the "National High-Tech Enterprise", "National Special New 'little giant' Enterprise", the highest award of China's machine tool industry "Spring Swallow Award", "China Machine Tool Industry 'Top 10 Product Quality'", "China Machinery Industry Science and Technology Progress 2nd Award" and more than 80 key honors.

CONTENTS

04

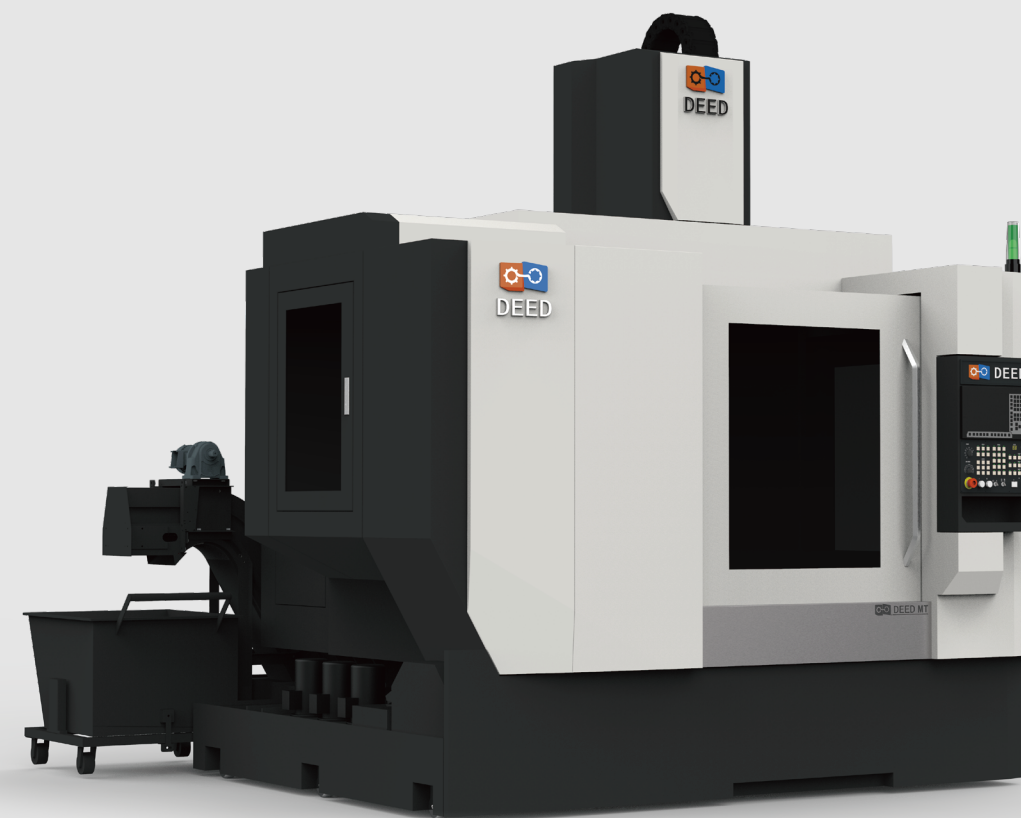
GV系列立式加工中心 GV SERIES VERTICAL MACHINING CENTER

简介、产品优势、技术参数、标准配置、选购配置
INTRODUCTION, ADVANTAGES, TECHNICAL PARAMETER, STANDARD CONFIGURATIONS & OPTIONS

09

售后服务 AFTER-SALES SERVICE

24/7 全天候不间断服务
24/7 NON-STOP SERVICE



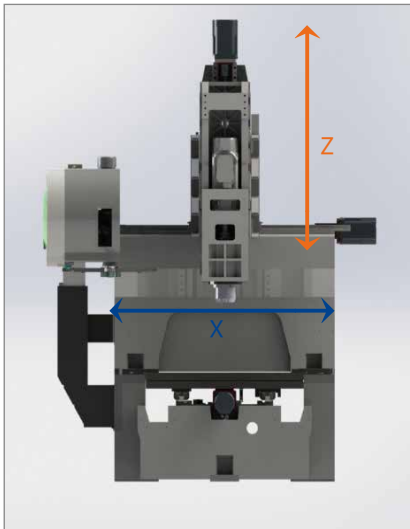
GV系列 立式加工中心 GV Series Vertical Machining Center

本系列立式加工中心主要应用于模具和高精密零部件加工领域，机床采用对称式、高刚性、稳定可靠的龙门结构，使用刚性和热稳定性能优异的矿物质床身，机体与底座同宽，工作台独立于底座之上提供全行程支撑，具有高速、稳定、高精度特性。机床可通过配置丝杠冷却、主轴冷却、床身冷却、驱动电机温度控制、冷却液温度控制等全方位的冷却措施保障机床持续稳定的高精度，其优异的动态性能、理想的轴比、高精度和高稳定性为客户高精度工件的生产提供可靠的解决方案。

This series of vertical machining centers are mainly used for mold and high-precision parts processing. The machine tool adopts symmetrical, high-rigidity, stable and reliable gantry structure, and uses mineral casting bed with excellent rigidity and thermal stability, Machine main body same width as machine base, worktable separate from machine base to provide full-travel support, all these specifications contribute to high-speed, stable and high-precision machine performance. With excellent dynamic performance, ideal axial ratio, high-precision and high-stability, it can provide reliable solutions for production demands of high-precision workpieces.

产品优势

PRODUCT ADVANTAGES



采用门式结构，大部分进给运动集中在非载重部件上，减小运动惯性，保证加工质量；

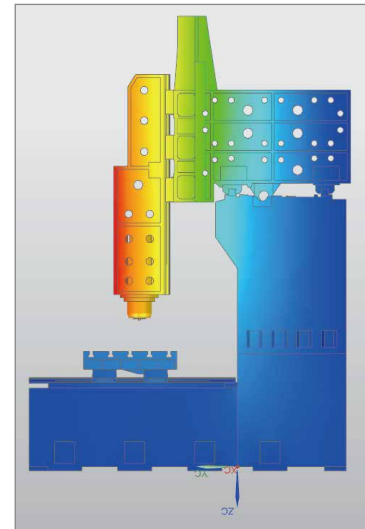
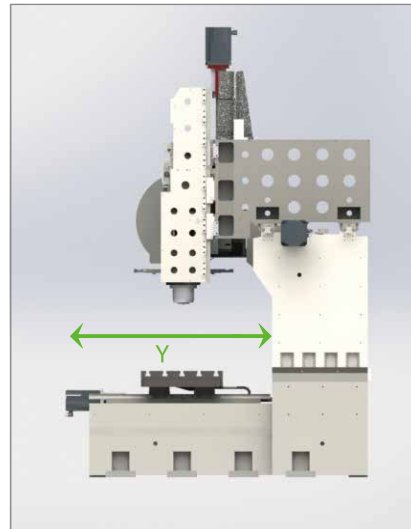
采用门式结构，大跨距支撑形式保证基础部件接触刚性及力学刚性；

采用门式结构，主轴箱重心与横梁距离大幅缩短，保证主轴良好的加工刚性。

Portal structure can help concentrate most feed movement on non-load parts, thus reduce motion inertia and ensure processing quality;

Portal structure together with large-span support form can help ensure basic components contact rigidity and mechanical rigidity;

Portal structure can help shorten the space between spindle box gravity center and beam, thus ensure spindle excellent processing rigidity.

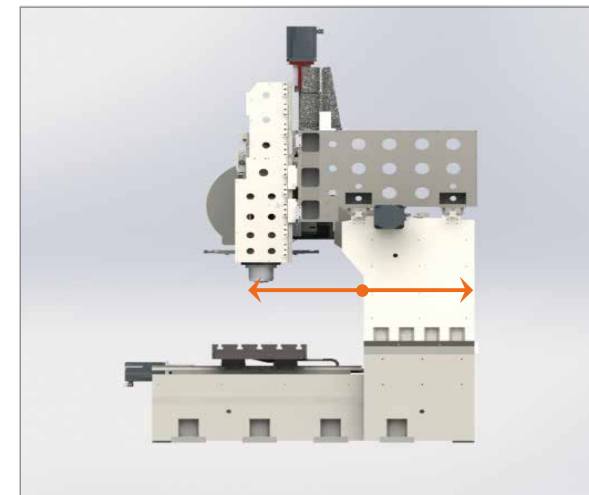


机床结构经有限元分析，已达最佳刚性结构

FEA result shows the machine tool has already reached the best rigidity structure in this condition.

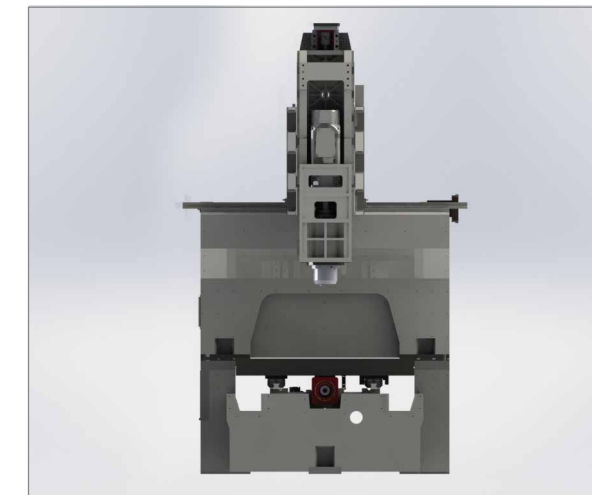
横梁

BEAM



横梁厚度大，主轴中心到立柱前支撑面距离与立柱厚度比例1:1，刚性更好

Big beam thickness, spindle center to column front support surface space: column thickness=1:1 good rigidity

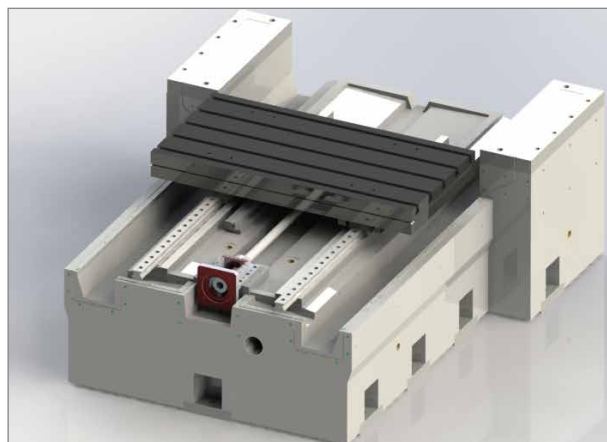


横梁全程支撑，机床加工刚性好

beam full travel support, excellent processing rigidity.

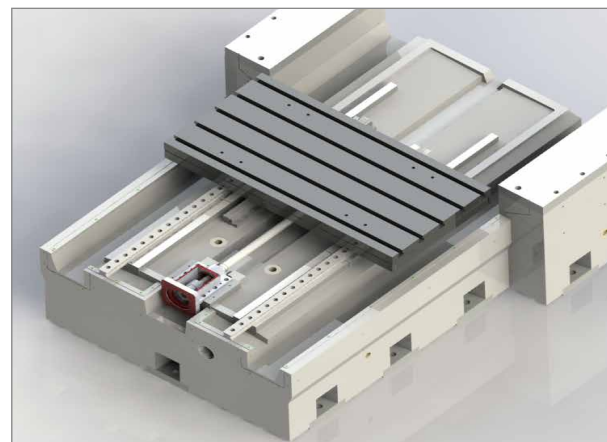
床身

MACHINE BED



Y轴电机座前置，减少丝杠热伸长带来的零点漂移的影响

Y-axis motor seat placing in front, can help reduce the impact of zero-point shift caused by ball screw thermal expansion .

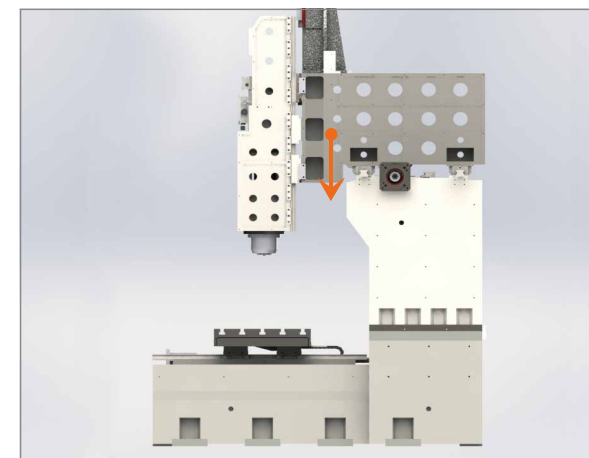


床身两侧为通槽设计，方便前排、后排、螺旋排屑器的配置切换

Both sides of the bed are equipped with full channels,it can help for easy shift of chip conveyor positions from front to back, or shift the model from chain type to auger type.

滑座主轴箱部分

SADDLE AND SPINDLE BOX

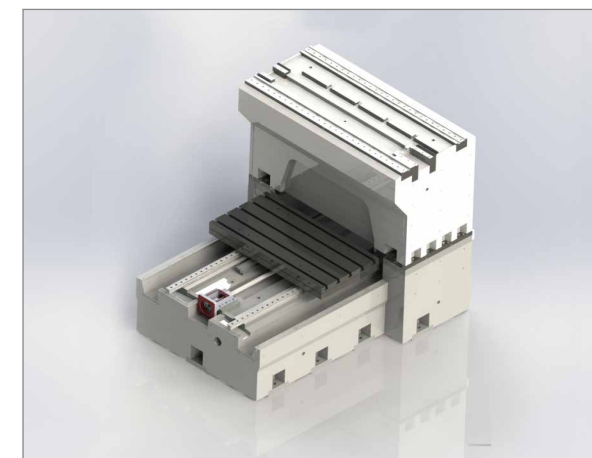


重心悬伸短，加工刚性好

gravity center short overhang, good processing rigidity.

工作台

TABLE



工作台工作行程内完全位于横梁之外，可使用各种超长工装

worktable is completely outside of the beam working range while moving within effective travel, it can allow various large length fixtures when needed.

技术参数

TECHNICAL PARAMETER

配置 Configuration		型号 Model	单位 Unit	GV50B	GV60B	GV70B
加工范围 Processing Range	X轴行程 X axis travel	mm	800	1100	1300	
	Y轴行程 Y axis travel	mm	500	600	700	
	Z轴行程 Z axis travel	mm	500	600	700	
	主轴鼻端至工作台面距离 Spindle nose to table	mm	150 ~ 650	150 ~ 750	150 ~ 850	
工作台 Worktable	工作台尺寸 Table size	mm	950×500	1200×600	1400×700	
	工作台最大载重 load capacity	kg	600	1000	1500	
进给 Feed	X/Y/Z轴快速进给速度 X/Y/Z axis rapid traverse	m/min	40/40/32	40/40/32	36/36/32	
主轴 Spindle	驱动方式 Drive mode	/	直联式 Direct drive	直联式 Direct drive	直联式 Direct drive	
	主轴锥度 Spindle taper	/	BT40	BT40	BT40	
	最高转速 Max. Speed	r/min	12000	12000	12000	
	功率(额定/最大) Power(rated/max)	KW	11/22	11/22	11/22	
	扭矩(额定/最大) Torque(rated/max)	N·m	53/106	53/106	53/106	
精度 Accuracy	X/Y/Z轴定位精度（半闭环） X/Y/Z axis positioning (semi closed loop)	mm	0.005（全长） (Full length)	0.005（全长） (Full length)	0.006（全长） (Full length)	
	X/Y/Z轴重复精度（半闭环） X/Y/Z axis repeatability (semi closed loop)	mm	0.003（全长） (Full length)	0.003（全长） (Full length)	0.004（全长） (Full length)	
刀库 Tool magazine	型式 Type	/	圆盘 Disc	圆盘 Disc	圆盘 Disc	
	刀库容量 Capacity	/	24	24	24	

标准配置

STANDARD CONFIGURATION

序号 No.	名称 Name	序号 No.	名称 Name
1	Siemens 828D数控系统 Siemens 828D CNC system	11	工作区照明 Work area lighting
2	三轴滚柱线轨 Roller linear guideway for 3 axes	12	空调 Air conditioner
3	三轴滚珠丝杠 Ball screw for 3 axes	13	工件水冷 Workpiece water cooling
4	主轴锥孔吹气 Spindle taper air blowing	14	工件气冷 Workpiece air cooling
5	主轴气幕防尘 Spindle air curtain dust-proof	15	BT40-24T刀库 BT40-24T tool magazine
6	主轴环喷 Spindle ring spray	16	链式排屑器 Chain type chip conveyor
7	自动润滑系统 Automatic lubrication system	17	油冷机 Oil cooler
8	气枪 Air gun	18	手持脉冲发生器 Handheld pulse generator
9	水枪 Water gun	19	双泵底盘冲屑 Double pump flushing device
10	电柜箱照明 Electric cabinet lighting	/	/

选购配置

OPTIONS

选配/Options	GV50B	GV60B	GV70B
FANUC系统/FANUC controller	<input type="radio"/>	<input type="radio"/>	<input type="radio"/>
光栅尺/Grating scale	<input type="radio"/>	<input type="radio"/>	<input type="radio"/>
中心出水/CTS	<input type="radio"/>	<input type="radio"/>	<input type="radio"/>
电主轴/Electrical spindle	<input type="radio"/>	<input type="radio"/>	<input type="radio"/>
水冷机/Water cooler	<input type="radio"/>	<input type="radio"/>	<input type="radio"/>
门联锁/Door interlock	<input type="radio"/>	<input type="radio"/>	<input type="radio"/>
四轴转台/4-axis rotary table	<input type="radio"/>	<input type="radio"/>	<input type="radio"/>
自动门/Automatic door	<input type="radio"/>	<input type="radio"/>	<input type="radio"/>
对刀仪/Tool setter	<input type="radio"/>	<input type="radio"/>	<input type="radio"/>
在线测量/Online measurement	<input type="radio"/>	<input type="radio"/>	<input type="radio"/>
油雾收集器/Oil mist collector	<input type="radio"/>	<input type="radio"/>	<input type="radio"/>
油水分离机/Oil skimmer	<input type="radio"/>	<input type="radio"/>	<input type="radio"/>
切削液冷却/Cutting liquid cooling	<input type="radio"/>	<input type="radio"/>	<input type="radio"/>
丝杠冷却/Ball screw cooling	<input type="radio"/>	<input type="radio"/>	<input type="radio"/>

24/7 全天候不间断服务

24/7 NON-STOP SERVICE

- 售后服务工程师平均具有 10 年机床维修经验, 客户故障 2 小时响应回复;
After-sales engineers averagely have over 10 years machine tool industry service experience, can respond to customer failure within 2 hours ;
- 全国设有 30 个销售及售后服务网点, 售后网点覆盖范围 24 小时内到场服务;
30 sales& serve centers inside of China, can give on-site service within 24 hours in near covering range;
- 提供完善的客户培训计划及操作指南;
Comprehensive training system and operation guidance ;
- 标准化的售后交机及售后服务流程;
Standardized machine delivery and after-sales service process;
- 购买机床, 终身服务。
1-time purchase, life-time service.



NOTES